

Quick Start

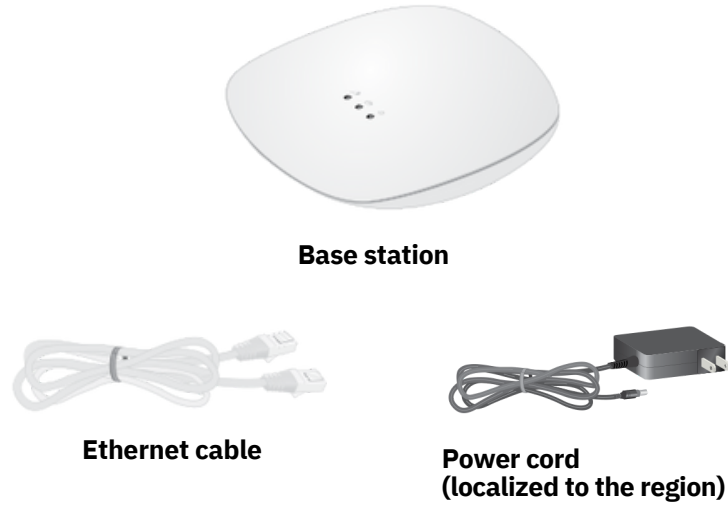
FlexPower Base Station for FlexPower ONVIF Cameras

Model VNB4000-111PAS



NETGEAR®

Package Contents



Note: For the ceiling and wall installation kit, see the other side of this document.

The FlexPower Base Station accepts WiFi streaming video data from NETGEAR FlexPower ONVIF Wire-Free IP Cameras and delivers the video data to ONVIF-compliant VMS platforms such as Milestone. Each base station supports WiFi streaming from up to four cameras.

Step 1: Install the Base Station

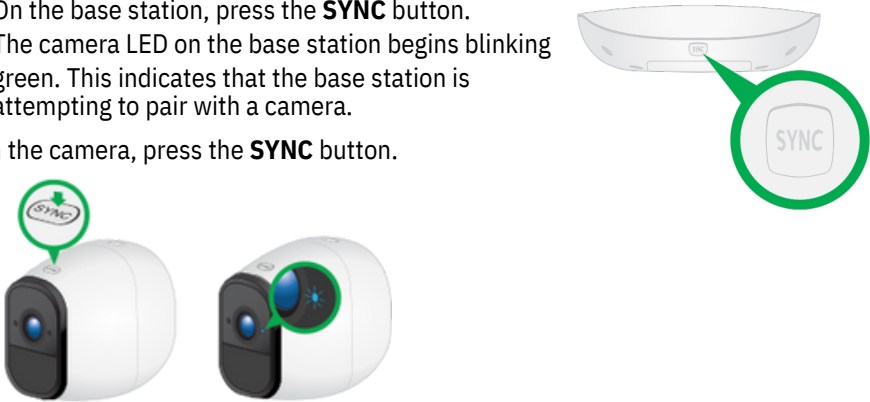
1. Use an Ethernet cable to connect the base station to a router or switch.
2. Connect the power cord that came in the package to the base station and plug it in to an electrical outlet.



3. Press the **Power** button on the rear of the base station.
After the base station boots, the Power LED and the Network LED light solid green.

Step 2: Sync Your Cameras to the Base Station

1. Make sure that the rechargeable battery is installed in the camera and the camera is powered on.
For information about how to install the camera battery, see the quick start guide that came with the camera.
2. Place the camera 2 to 4 feet (60 to 120 cm) from the base station.
3. On the base station, press the **SYNC** button.
The camera LED on the base station begins blinking green. This indicates that the base station is attempting to pair with a camera.
4. On the camera, press the **SYNC** button.



The camera LED blinks blue. This indicates that the camera is attempting to pair with the base station.

When the camera is paired to the base station, the camera Sync LED blinks blue rapidly and then the camera LED on the base station lights solid green.

5. Repeat Steps 1–4 to pair more cameras to the base station, if desired.
6. Move the cameras to the desired locations.

Step 3: Initial Setup

During initial setup, your computer or mobile device must be connected to the same LAN as the base station. An Internet connection is not required.

1. Connect your computer or mobile device to the same LAN as the base station.

If you are unable to connect to the same LAN using WiFi, use an Ethernet cable to connect a computer to the same router or switch as the base station.
2. Do one of the following:
 - **Windows-based computer.** Open a folder and then click **Network** or **Network Places**. Look for a **FlexPowerBS-xxx** icon. It might appear in the other devices category.
 - **Mac, Linux, or mobile device.** Open a web browser and enter **http://FlexPowerBS-xxx/** (replace xxx with the last 3 digits of the base station serial number). The serial number is on the base station label.
 - **IP address.** Use your router's admin web interface or a network scan tool to look up the IP address for the base station and then type the IP address into your browser address bar.
3. Enter the password.
The default password is **password**.
4. When prompted, create a new password.
You are prompted to select 60 hz or 50 hz for the flicker setting.
5. Either accept the **60 hz** default setting, or select **50 hz**.
The home page displays all cameras that are paired to the base station.

To change the camera names, use the **Camera Settings** menu for each camera.

To refresh the camera image, tap or click the **Snapshot** button for each camera. This is useful when mounting and positioning the camera.

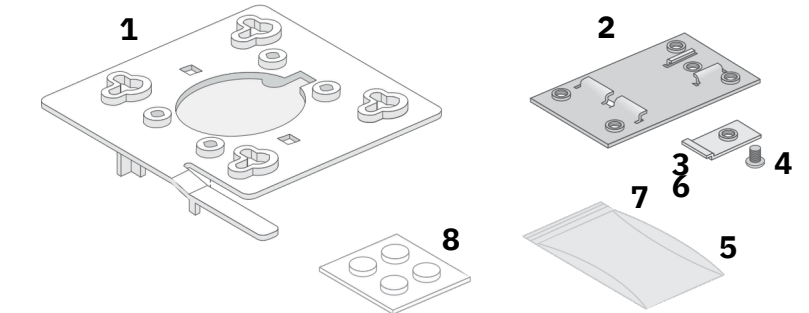
For optimal performance, we recommend that you set up motion detection sensitivity and a motion detection schedule, as described in the *Wire-Free IP Camera Base Station User Manual*.

Installation on a Flat Surface

You can mount the base station on a ceiling or wall, or install it on a flat surface. For optimal antenna performance, we recommend mounting the base station on a ceiling or installing it on a flat surface. For information about how to mount the base station, see the other side of this document.

For installation on flat surface, attach the four round rubber feet to the locations marked by the gray circles on the bottom of the base station.

Ceiling and Wall Installation Kit

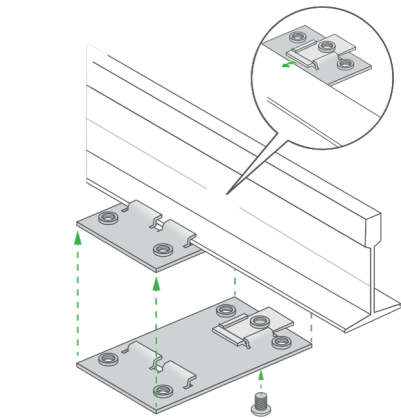


- 1 Plastic bracket for either drop ceiling mounting or wall mounting
- 2 Metal bracket for drop ceiling mounting
- 3 One metal T-bar for drop ceiling mounting
- 4 One lock screw to lock the T-bar for drop ceiling mounting
- 5 Four short screws to attach the metal bracket for drop ceiling mounting
- 6 Four tall screws to attach the plastic bracket for wall mounting
- 7 Four anchors for the tall screws for wall mounting
- 8 Four rubber feet for desk installation

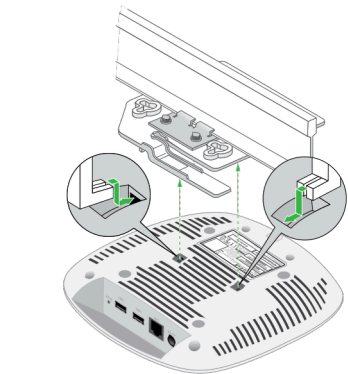
Drop Ceiling Installation

If you are mounting the base station on a hard ceiling instead of a ceiling bar that is typical for a drop ceiling, use the wall installation instructions.

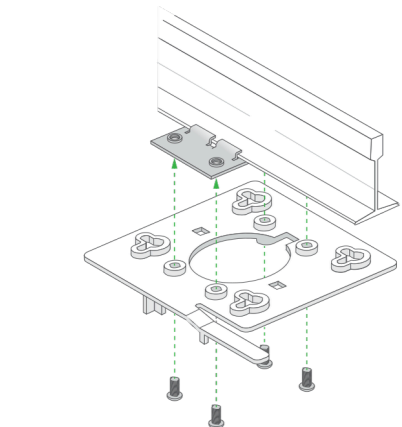
1. Slide the T-bar partially into the metal bracket and attach the metal bracket to the ceiling bar.
Then push the T-bar over the ceiling bar and use the lock screw to lock the metal bracket into place.



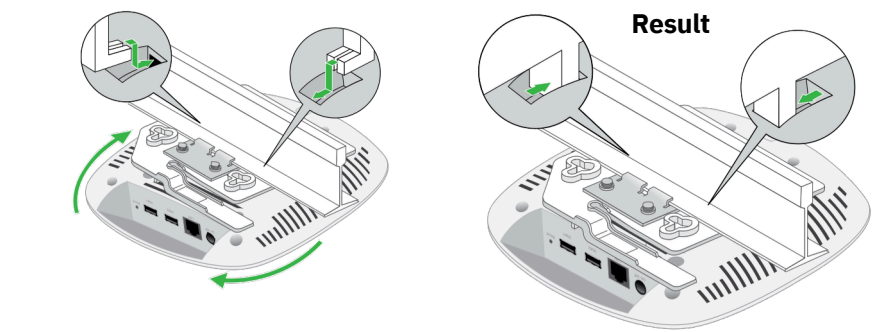
2. Making sure that the two protruding hooks on the plastic bracket are facing down, place the plastic bracket against the metal bracket and align the four inner holes of the plastic bracket with the four holes of the metal bracket.



3. Then insert the four short screws and secure the plastic bracket onto the metal bracket.
Hold the base station upside down, with the bottom facing the plastic bracket that is attached to the metal bracket, and align the two rectangular holes in the bottom of the base station with the protruding hooks on the plastic bracket

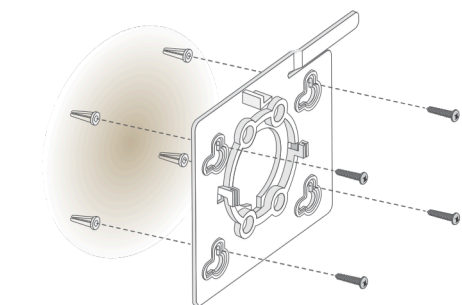


4. Push the hooks into the holes and turn the base station to secure it onto the plastic bracket.



Wall Installation

1. Place the plastic bracket on the wall where you want to mount the base station.
2. Mark the wall where the four outer mounting holes are.
3. Using the wall anchors and tall screws, attach the mounting bracket to the wall.



4. Align the two rectangular holes in the bottom of the base station with the protruding hooks on the plastic bracket.



5. Push the hooks into the holes and turn the base station to secure it onto the plastic bracket.



Support

Thank you for purchasing this NETGEAR product. You can visit www.netgear.com/support to register your product, get help, access the latest downloads and user manuals, and join our community. We recommend that you use only official NETGEAR support resources.

Si ce produit est vendu au Canada, vous pouvez accéder à ce document en français canadien à <http://downloadcenter.netgear.com/other/>.

(If this product is sold in Canada, you can access this document in Canadian French at

<http://downloadcenter.netgear.com/other/>.)

For the current EU Declaration of Conformity, visit

http://support.netgear.com/app/answers/detail/a_id/11621/.

For regulatory compliance information, visit

<http://www.netgear.com/about/regulatory/>.

See the regulatory compliance document before connecting the power supply.

