



All your network & security under one umbrella including support of VLAN, VPN and firewall

Introducing the highly anticipated addition to our networking line: the PR60X 10G/Multi-Gigabit Dual WAN Pro Router with Insight Remote Cloud Management. Easily connect and manage internet traffic between wired devices within a secure network to support business operations. This cutting-edge router is designed to meet the needs of businesses

and professional users who require lightning-fast speeds and exceptional connectivity with remote management capabilities. The Dual WAN functionality includes failover protection, ensuring uninterrupted internet connectivity for critical applications and services. The sleek, updated form factor of the router is designed for mounting with the ports in the rear, but can be installed reversed

with the included, rack ears. As an Insight Remote Managed product, configuration and management is simple, stress-free, and available 24/7 from any location.



## Highlights

### Intelligent Router

Providing all the routing and network segmentation features that a router must have, the NETGEAR 10G/Multi-Gigabit Dual WAN Pro Router with Insight Cloud Management will be the backbone of any modern small business.

10G/Multi-Gigabit LAN/WAN ports keep your data moving at top speed. IPSec Site-to-Site VPN allows interconnection between two networks for headquarter and brand office. With Network Address Translation (NAT) routing, all the users in your office can access your broadband connection at the same time.

Leverage up to 32 VLANs to separate the network into smaller groups for more secure and efficient use of network resources. Simplify network administration with up to 32 DHCP server assigning IP addresses automatically.

### Remote Management

The NETGEAR Insight Remote Management platform offers visibility and access to the routing features from a single pane of glass. Register, configure, manage and monitor your router with just a few taps from your Insight mobile App or web portal.

**Business Grade** The quietly operating 19-inch rack-mountable metal unit is backed by the industry's best-in-class 3-year hardware warranty, 90-day free technical support, and 3-year next business day replacement.

**NETGEAR®**  
INSIGHT

## Simply activate NETGEAR Insight Cloud management to manage your network. Anytime. Anywhere.

Activating NETGEAR Insight Cloud management enables users to experience simpler configuration and deployment from anywhere using the NETGEAR Insight app from mobile devices or the Insight Cloud portal from any device with a web browser.

Unique advanced management features of these Insight managed devices include:

- Remote monitoring and management with performance dashboards and troubleshooting features including remote reboot, port and PoE advanced configuration including remote enable/disable/power-cycle, PoE scheduling, and firmware updates with auto-schedule mode
- Single pane-of-glass multi-device, multi-network, and multi-site remote monitoring and notifications with the NETGEAR Insight app
- Full-fledged local or remote access for configuration, management, and monitoring on a larger display using your tablet, laptop, or desktop computer through the NETGEAR Insight Cloud portal
- Configurable in-app and email alerts and notifications
- Auto-join and configure (zero-touch provisioning) for additional Insight managed devices added to the network
- Centralized network configuration (policies) across Insight managed switches, and access points for VLANs, ACLs, QoS, LAGs, etc.
- Cloud-based network administration, monitoring, and firmware management

For more information about NETGEAR Insight-manageable device settings, please see at:  
<https://www.netgear.com/support/product/Insight.aspx>



As a part of NETGEAR's Total Network Solution, this product is compatible with a wide range of routers, access points and switches that can be remotely managed through the Insight Remote Cloud Management platform.

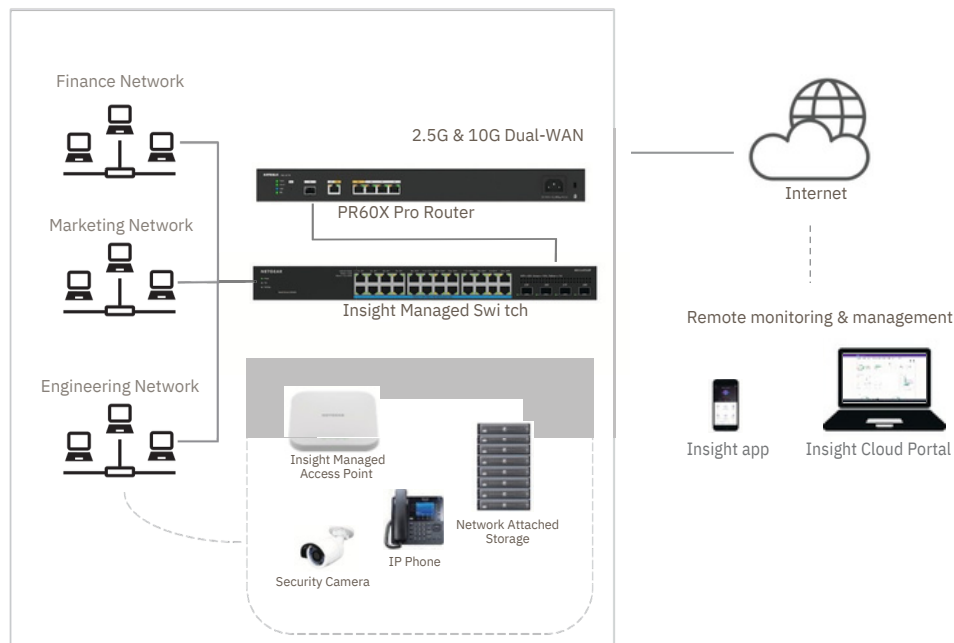
Find out more: [www.netgear.com/total](http://www.netgear.com/total)

## Features and Benefits

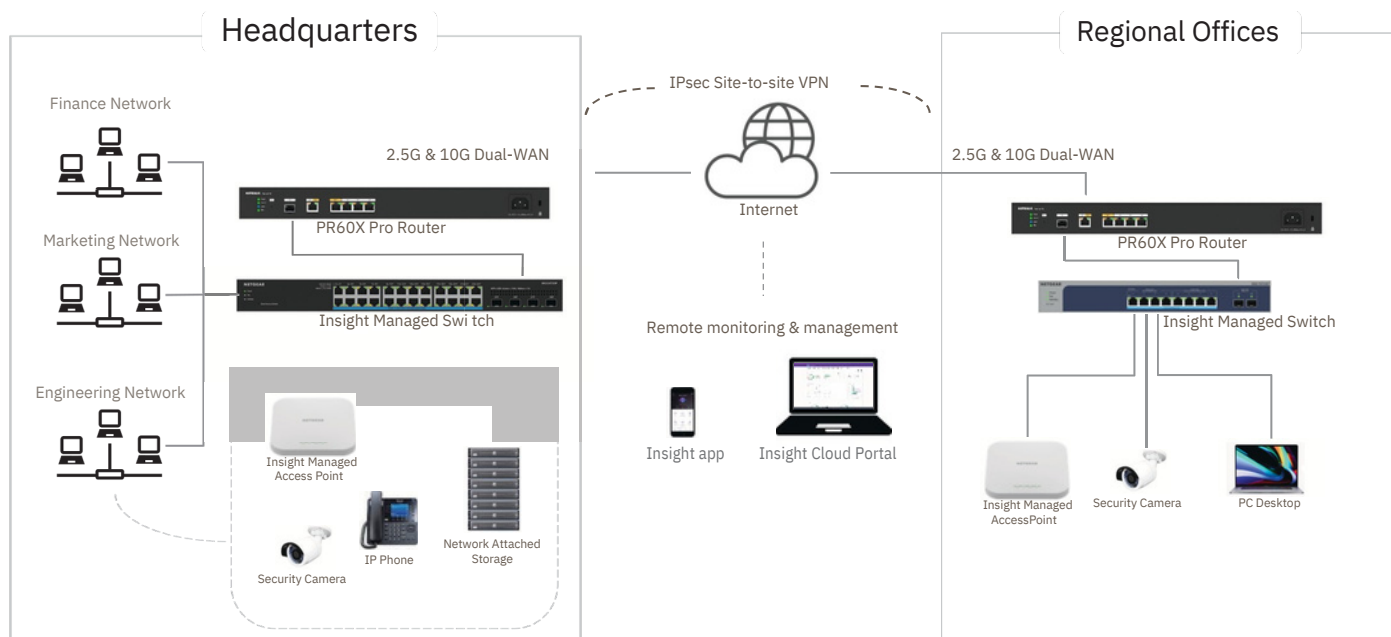
High performance hardware	10G/Multi-Gigabit throughput and 1x2.5G WAN, 1x10G/Multi-Gigabit WAN/LAN configurable port, 3x2.5G LAN and 1x10G SFP+ LAN.
WAN-to-LAN Throughput	When using WAN2 port - 10Gbps max WAN with 17.5Gbps max LAN When using WAN1 port only - 2.5Gbps max WAN with 27.5Gbps max LAN
Primary and secondary internet connections	Dual WAN ports for failover accommodating two internet connections to maintain a reliable link. The first connection functions as the primary and the other as a backup.
Leverage up to 32 VLANs	Separate the network into smaller groups for more secure and efficient use of network resources.
Supports up to 32 DHCP servers	Allows for automatic assignment of IP addresses, simplifying network administration.
Firewall protection against malicious incoming traffic	Prevents unauthorized access to the network and monitors the communications between the network and the outside world with support up to 250,000 concurrent connections.
NETGEAR Insight Remote/Cloud Management	Instant discovery, configuration, and management of your network and Pro Router. Free 1-year subscription included.
Versatile rackmount design	Reverse mounting rack ears included for front-facing or rear-facing ports as desired for a clean or traditional look.
IPSec Site-to-Site VPN	Provides up to 30 VPN tunnels for businesses to connect remote workers, branch offices, and partners to the main corporate network.
IPSec Client-to-Site VPN	Provides up to 60 client device connections (max total 60 combined with IPSec Site-to-Site)
Dynamic DNS	Updates DNS records automatically to reflect WAN IP address change.
mDNS Gateway	Allows services such as printer, AppleTV and Chromecast TV, to traverse across VLAN networks.
LLDP	Provides a direct line of communication between two systems over the same link.
QoS (Smart Queue Management)	Mitigates upload/download latency per WAN port.

### Target Applications

#### Small Office - IT Business PR60X



#### Headquarters - Regional Offices - IT Business PR60X



## Technical Specifications

FeaTuReS		PR60X
Connectivity		
Gigabit Ports WAN/LAN	1 x 10G/Multi-Gigabit Copper (Configurable LAN/WAN) 1 x 2.5G/1G RJ-45 (WAN) 3 x 2.5G/1G RJ-45 (LAN) 1 x 10G/1G SFP+ (LAN)	
DMZ Interfaces (Configurable)	Yes	
Performance		
LAN-to-WAN Throughput	For 2.5G WAN port, LAN-to-WAN throughput is 2.4Gbps For 10G WAN port, LAN-to-WAN throughput is 9.4Gbps	
Maximum Number of VLANs	32	
Concurrent Connection Limit	60,000	
Concurrent Client Limit	2,000	
LaN-WaN BiDirectional Throughtput		
Stream	uDP BiDirectional	TCP BiDirectional
LAN1, LAN 2, LAN 3 to WAN 2	13.88 Gbps (4.48+4.70+4.70)	13.87 Gbps (4.50+4.68+4.69)
LAN 1 to LAN 2	4.77 Gbps	4.70 Gbps
LAN 1 to WAN 1	4.77 Gbps	4.70 Gbps
WAN 1 to LAN 5	4.76 Gbps	4.66 Gbps
WAN 1 to LAN 4	4.76 Gbps	4.67 Gbps
WAN 2 to LAN 4	18.77 Gbps	18.83 Gbps
LAN 4 to WAN 2	18.77 Gbps	18.78 Gbps
Security		
Firewall Functions	Firewall Traffic Rules/Scheduling, Port Forwarding, Port Triggering, Stateful Packet Inspection (SPI), Port/Service Blocking, Denial-of-service (DoS) Prevention, Stealth Mode, Block TCP Flood, Block UDP Flood, Respond To Ping on Internet Port	
VoIP SIP ALG	Yes	
Networking		
ISP Address Assignment	DHCP, Static IP Assignment, PPPoE	
NAT Modes	NAT	
Routing	Static, Dynamic, RIPv1, RIPv2	
DHCP Server	32	
Concurrent Clients	2,000	
Concurrent Connections	60,000	

## Technical Specifications

### Net working

VLANs (Up to 32) 802.1Q

Essential Networking Features MAC Address Cloning/spoofing,  
NTP Support, UPnP, Auto Uplink on Switch Ports  
Smart Queue Management

QoS Yes

mDNS Gateway Yes

Concurrent clients Yes

LLDP Yes

### VPN

IPsec Encryption/Authentication 3DES, AES (128, 192, 256 bit)/SHA-1,  
SHA-2 (256 bit), MD5

Key Exchange IKEv1, IKEv2, Pre-shared Key

Access Modes Remote access via Insight Remote Cloud Management

### Management

Management Options Insight Remote Cloud Management

Logging Accepted Packets, Dropped Packets Statistics, System, Source MAC filter,  
Session Limit, Bandwidth Limit, IPsec VPN

### Management

Log Delivery Insight logging

Troubleshoot Diagnostics Ping, DNS Lookup, Trace Route, Speed test

Maintenance Save/Restore Configuration, Restore to Factory Defaults,  
Firmware Upgrades, Display and Monitor Statistics

### Hardware

Processor Quad Core ARM A73 @ 2.2 GHz  
Packet Process Engine (PPE) processors

Flash Memory/RAM 2GB DDR4/4GB eMMC

Major Regulatory Compliance Environment: RoHS  
Safety: CE/LVD, CSA  
EMI: FCC Part 15 Class B, CE mark

Temperatures Operating Temperature: 0° - 40°C (32°-104° F)  
Storage Temperature: -20° - 70° C (-4° - 158° F)

Humidity Operating humidity 90% maximum relative humidity, non-condensing  
Storage humidity 95% maximum relative humidity, non-condensing

## Technical Specifications

Electrical Specifications	AC Input: 100-240V, 50/60Hz, 1.3A
Dimensions (W x D x H)	17.3 x 3.9 x 1.7in (440 x 100 x 43.2mm)
Weight	3.34lb (1.513kg)
System Requirements	Cable or DSL Broadband Modem, Internet Service, Windows Client Device, Internet Explorer/Firefox/Chrome/Safari Web Browser
<b>Warranty and Support</b>	
Hardware Warranty*	3 -year
Next Business Day Replacement	3 -year
Free Technical Support*	90 Days
ProSUPPORT OnCall** 24x7 Service Packs	Category 2 PMB0312-10000S PMB0332-10000S PMB0352-10000S
Insight Remote Cloud Management	1-year Insight subscription included
<b>Package Contents</b>	
PR60X	NETGEAR PR60X 10G/Multi-Gigabit Dual WAN Pro Router with Insight Cloud Management Rack-mount kit Rubber feet (for Desktop deployment) Power cord(s) (varies by region) Ethernet cable Installation guide

## Technical Specifications

### Ordering Information

North America

PR60X-100NAS

Europe

PR60X-100EUS

Asia Pacific

PR60X-100UKS (Hong Kong and Singapore)

PR60X-100AUS (Australia and New Zealand)

PR60X-100JPS (Japan)

PR60X-100KOS (South Korea)

PR60X-100INS (India)

PR60X-100TWS (Taiwan)

\*

\*\*

