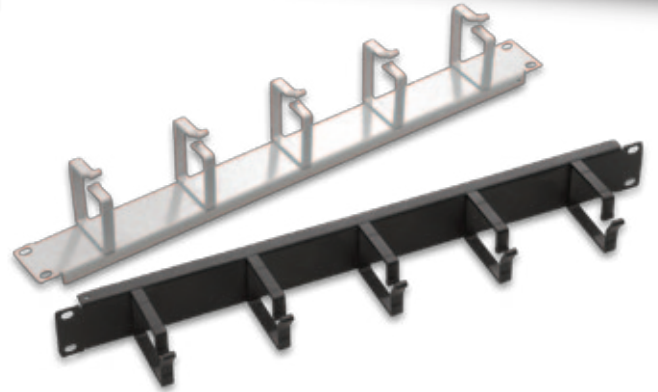
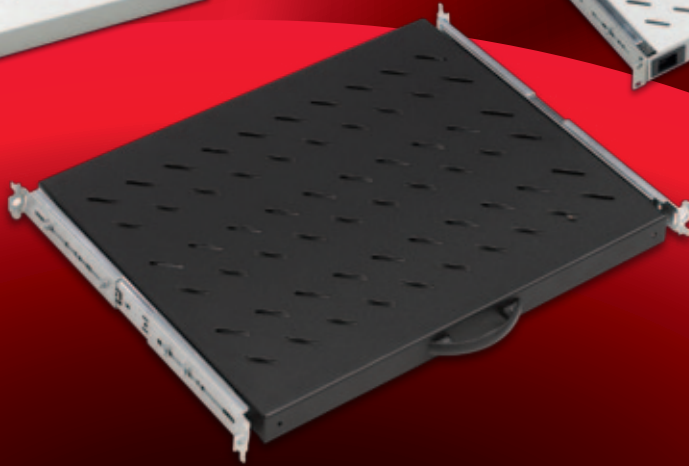
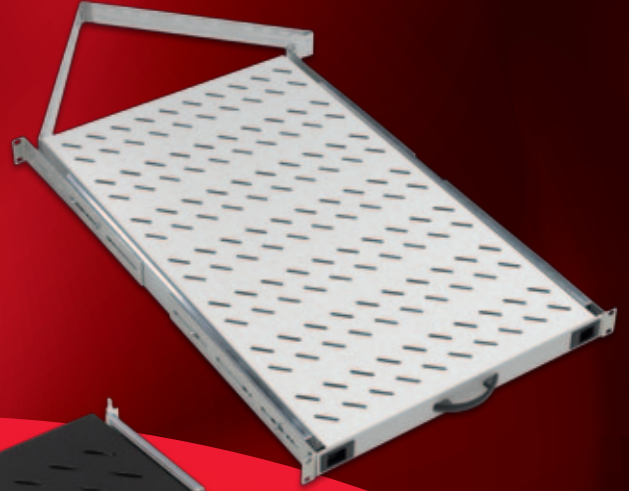
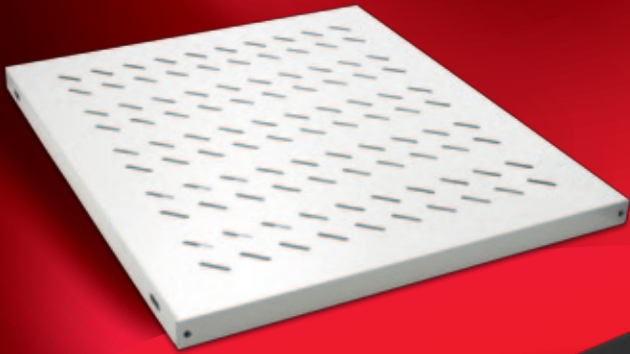


ACCESSORIES





4pcs Grounding wires, 4mm diameter Yellow /Green, 40cm long, for purpose of main grounding and potential equalization use.

GROUNDING SETS	Logistics Data						COMPATIBLE WITH																						
							DYNAMIC Series Free Standing Cabinets W (Width) x D (Depth) mm		DYNAMax Series Free Standing Server Cabinets W (Width) x D (Depth) mm		NETbox Series Wall Mounting Cabinets W (Width) x D (Depth) mm		19" NETbox Series SOHO Cabinets W (Width) x D (Depth) mm		10" NETbox Series SOHO Cabinets W (Width) x D (Depth) mm		19" NETbox Home Series Cabinets W (Width) x D (Depth) mm		NETbox Slim Series Cabinets W (Width) x D (Depth) mm		DYNAlframe Frame Systems W 530 x D (Depth) mm								
Part Number* and Product Description	Product Dimensions mm	Pack Dimensions mm	Product Net Weight kg	Product Gross Weight kg	QTY in Box pcs	Box Dimensions mm	Box Gross Weight kg	600x600	600x800	600x1000	800x600	800x800	800x1000	600x1000	800x1000	600x450	600x600	600x450+150	540x300	540x400	312x300	600x150	600x300	522x480	Single Frame with 80mm depth Frame	Double Frame System with 80mm depth Frame D:670mm	Double Frame System with 80mm depth Frame D:870mm	Double Frame System with 80mm depth Frame D:1070mm	Single Frame with 160mm depth Frame
LN-DGR-TPR-5L40-XX Grounding Set, 6 grounding point, 4pcsx4mm diameterx 40cm long yellow/green wires, for basic grounding of cabinet chassis and panels	260x55x50	260x55x50	0,2	0,2	32	550x430x400	7,9	●	●	●	●	●	●	●	●	●	●	●							●	●	●	●	●
LN-DGR-TPR-1U10-CC 19" rack mount 1U Grounding Set, 10 grounding point, 4 pcsx4mm diameter x 40 cm long yellow/green wires, can be installed at any U height for all cabinet models, 4pcs set of M6 fixing elements.	482x35x44	500x45x50	0,4	0,5	1	500x45x50	0,5	●	●	●	●	●	●	●	●	●	●	●	●	●		●			●	●	●	●	●
LN-DGR-TPR-DM20-XX Vertical Grounding Set 780mm long each ,2pcs 22x2=44 grounding points, 4 pcsx4mm diameter x 40 cm long yellow/green wires, incl the connection wire for the 2 copper bar.	25x25x780	35x35x800	1,5	1,7	1	35x35x800	1,7	**	**	**	**	**	**	**	**	**	**	**	**	**									

* CC= Color Code, LG Light Grey RAL 7035, BL Black RAL 9005, customers to define while ordering. ** 36U and above sizes are allows vertical grounding sets.